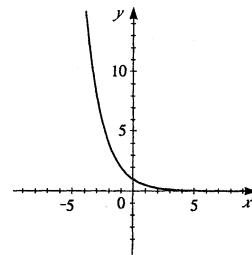


1.  $f(x) = \frac{1}{2^x}$ .

Domain:  $(-\infty, \infty)$

Range:  $(0, \infty)$

Asymptote:  $y = 0$ .

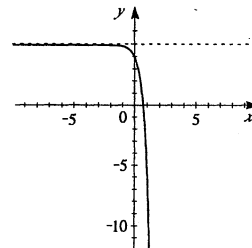


3.  $y = 5 - 10^x$ .

Domain:  $(-\infty, \infty)$

Range:  $(-\infty, 5)$

Asymptote:  $y = 5$ .

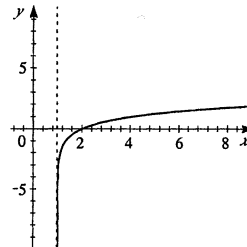


5.  $f(x) = \log_3(x - 1)$ .

Domain:  $(1, \infty)$

Range:  $(-\infty, \infty)$

Asymptote:  $x = 1$ .

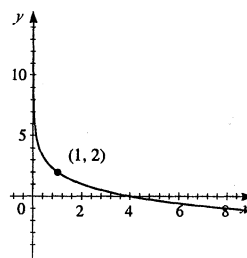


7.  $y = 2 - \log_2 x$ .

Domain:  $(0, \infty)$

Range:  $(-\infty, \infty)$

Asymptote:  $x = 0$ .



9.  $F(x) = e^x - 1$ .

Domain:  $(-\infty, \infty)$

Range:  $(-1, \infty)$

Asymptote:  $y = -1$ .

