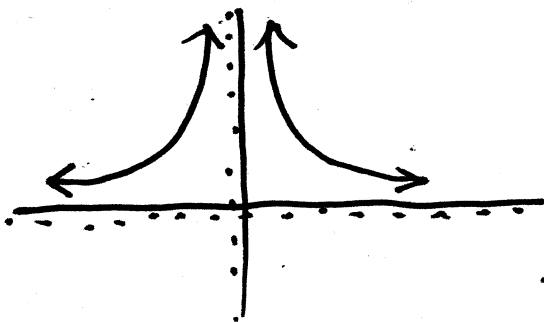


$$y = \frac{1}{(x-3)^4} + 7$$

START WITH

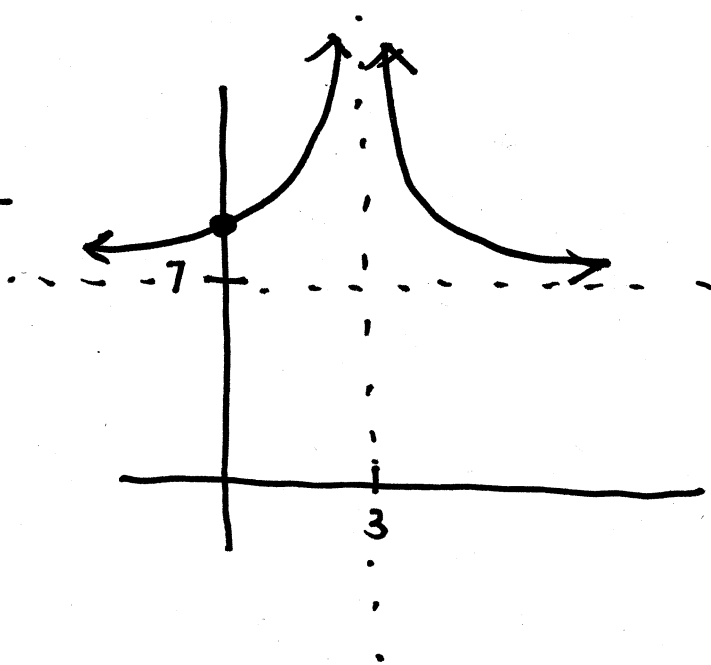
$$y = \frac{1}{x^4}$$



AND

SHIFT RIGHT BY 3

SHIFT UP BY 7



DOMAIN: ALL REALS  
EXCEPT  $x = 3$

RANGE:  $y > 7$

VA:  $x = 3$

HA:  $y = 7$

Y-INT: SET  $x = 0$

$$y = \frac{1}{3^4} + 7$$

$$y \approx 7.0123$$

X-INT: NONE