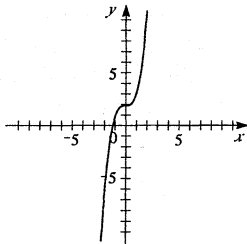
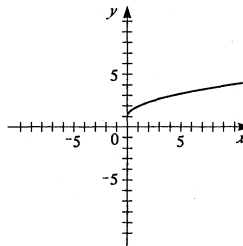


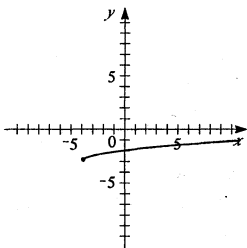
21.  $f(x) = x^3 + 2$ . Shift the graph of  $y = x^3$  upward 2 units.



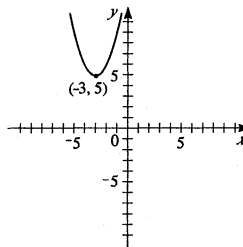
23.  $y = 1 + \sqrt{x}$ . Shift the graph of  $y = \sqrt{x}$  upward 1 unit.



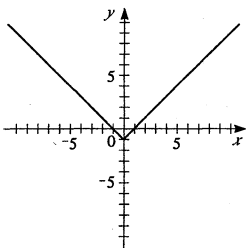
25.  $y = \frac{1}{2}\sqrt{x+4} - 3$ . Shift the graph of  $y = \sqrt{x}$  to the left 4 units, shrink vertically by a factor of  $\frac{1}{2}$ , and then shift it downward 3 units.



25.  $y = 5 + (x+3)^2$ . Shift the graph of  $y = x^2$  to the left 3 units, then upward 5 units.



29.  $y = |x| - 1$ . Shift the graph of  $y = |x|$  downward 1 unit.



31.  $y = |x+2| + 2$ . Shift the graph of  $y = |x|$  to the left 2 units and upward 2 units.

