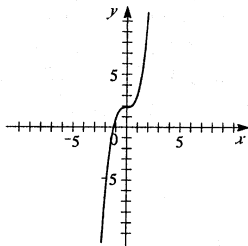
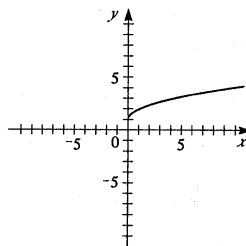


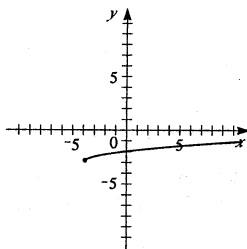
21. $f(x) = x^3 + 2$. Shift the graph of $y = x^3$ upward 2 units.



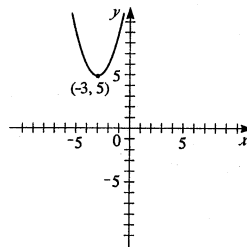
23. $y = 1 + \sqrt{x}$. Shift the graph of $y = \sqrt{x}$ upward 1 unit.



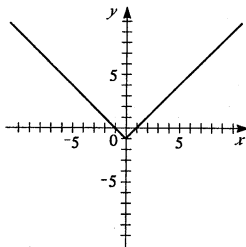
25. $y = \frac{1}{2}\sqrt{x+4} - 3$. Shift the graph of $y = \sqrt{x}$ to the left 4 units, shrink vertically by a factor of $\frac{1}{2}$, and then shift it downward 3 units.



25. $y = 5 + (x+3)^2$. Shift the graph of $y = x^2$ to the left 3 units, then upward 5 units.



29. $y = |x| - 1$. Shift the graph of $y = |x|$ downward 1 unit.



31. $y = |x+2| + 2$. Shift the graph of $y = |x|$ to the left 2 units and upward 2 units.

